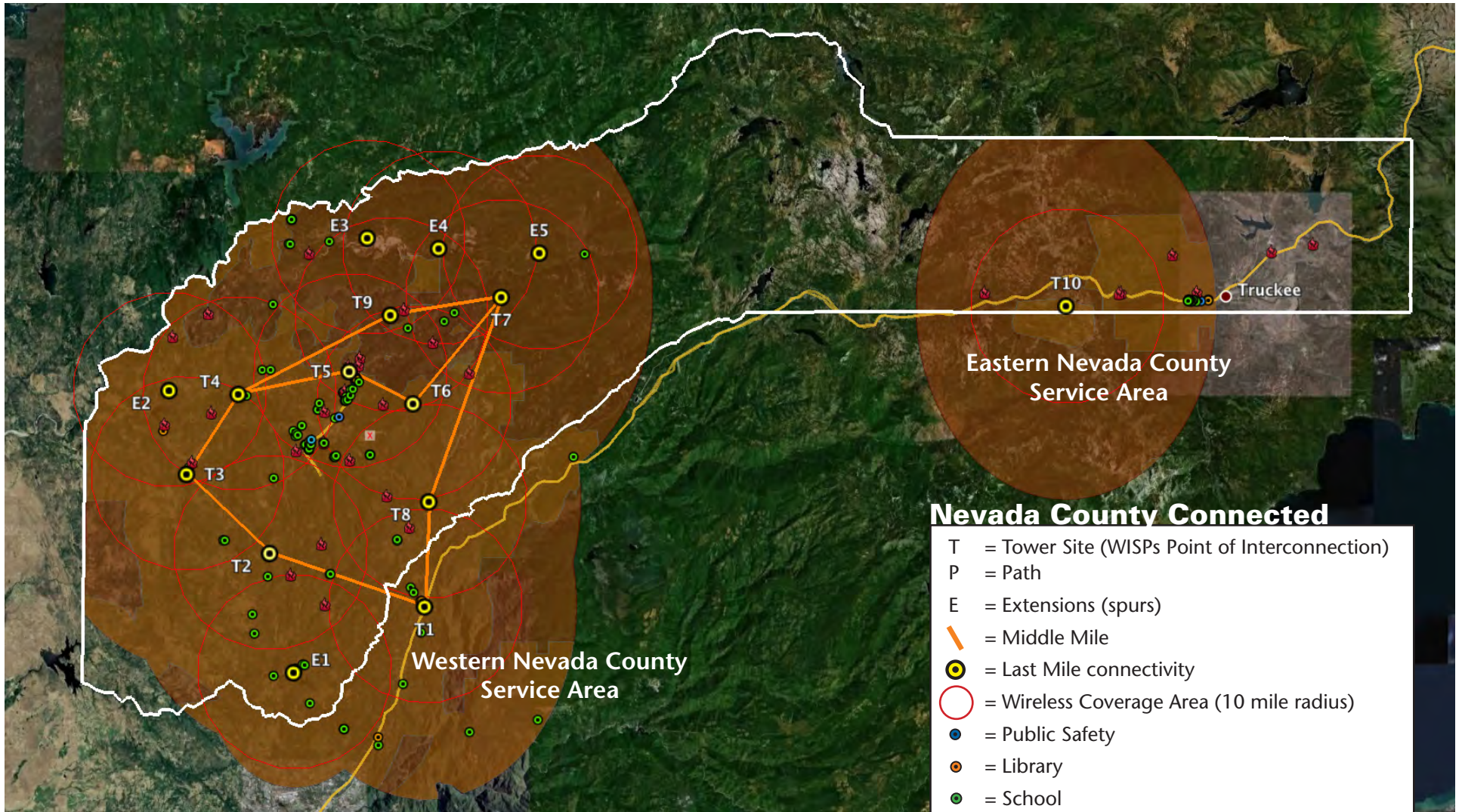


# Proposed Funded Service Area



## Nevada County Connected

- T = Tower Site (WISPs Point of Interconnection)
  - P = Path
  - E = Extensions (spurs)
  - = Middle Mile
  - ⊙ = Last Mile connectivity
  - = Wireless Coverage Area (10 mile radius)
  - = Public Safety
  - ⊙ = Library
  - ⊙ = School
  - 🚒 = Fire Station
- See Tower List for location details.